



# BTSK5

**AUTOMATIC BALANCING MACHINE FOR ASSEMBLED VACUUM CLEANER MOTORS.**

Automatic balancing machine for assembled vacuum cleaner motors. Machine complete with: unbalance measuring unit, impeller angular positioning and unbalance compensation unit by punching of the impeller.

The assembled vacuum cleaner motor is picked up directly from the loading transport system that normally is supplied by the Customer and it is a pallet line.

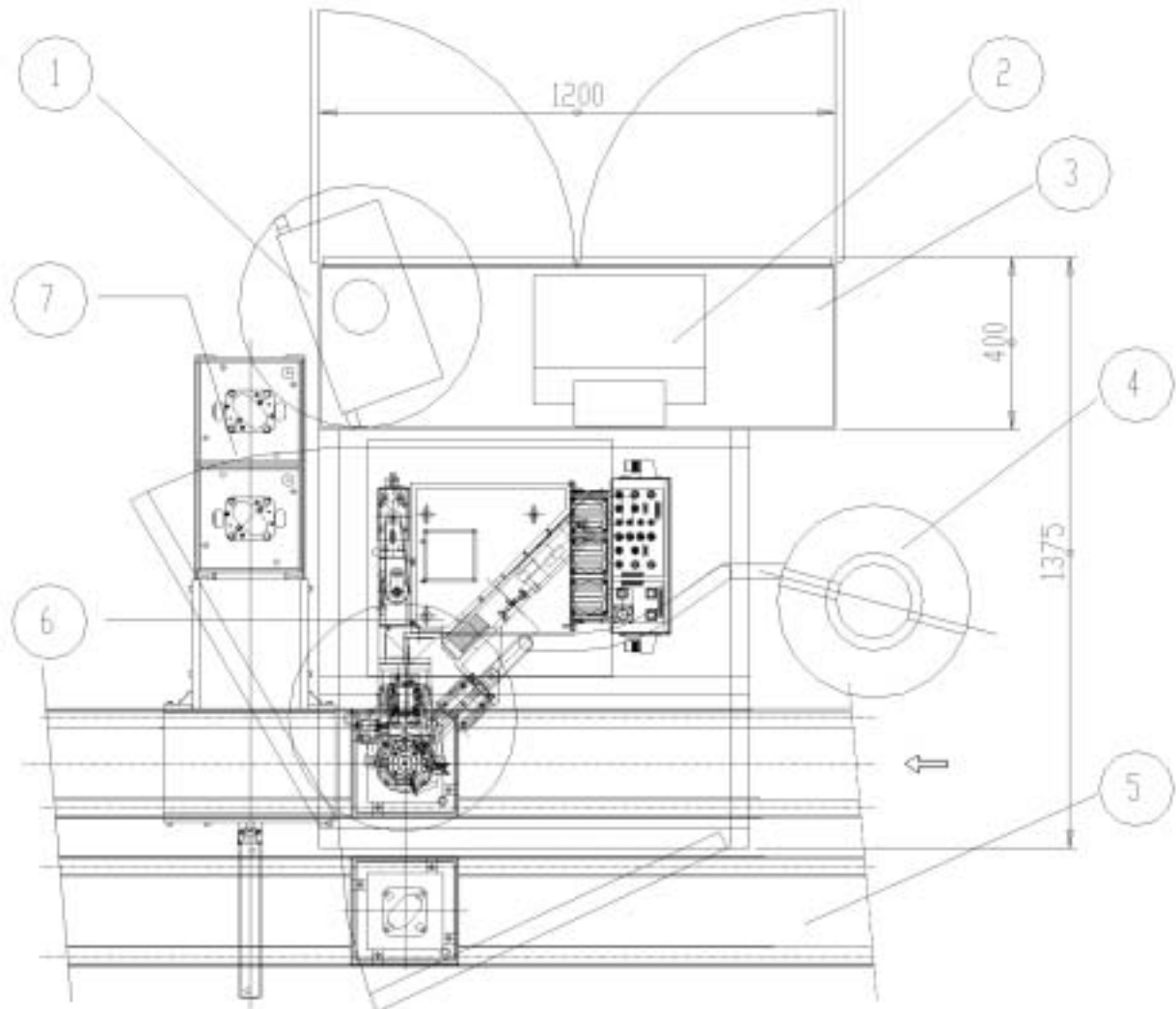
Machine easy to install and to utilize. The machine can be tooled for many different types of assembled vacuum cleaner motors.

Machine controlled by a PC.



- > Compact dimension
- > High measuring precision
- > High balancing precision
- > Users friendly
- > Fast change over





- |                       |  |
|-----------------------|--|
| 1) PC MONITOR         | 5) FEED CONVEJOR ( CUSTOMER SUPPLY )   |
| 2) PRINTER            | 6) MEASURING AND WORKING UNIT          |
| 3) ELECTRICAL CABINET | 7) REJECT CONVEYOR ( CUSTOMER SUPPLY ) |
| 4) VACUUM CLEANER     |  |

Technical Data		Option
Workable parts:		Vacuum systems to remove the punching chips
Max weight of the parts	4kg	SPC/SW and printer
Minimum impeller diameter	60mm	Modem
Maximum impeller diameter	140mm	
Cycle time	17 sec.	
Controlled by	PC	
Measuring precision	1mg.	
Balancing methods:	punching	
Machine dimensions ( mm)	1200 x 1375 x 2000	
Machine Weight	1000 kg.	

Specifications may be subject to changes without notice © 2002 By Balance Systems – Printed in Italy M0130E

Balance Systems s.p.a.  
 via Ruffilli, 2/4  
 20060 Pessano con Bornago  
 (Milano) Italy  
 Tel. +39.029 504 955  
 Fax +39.029 504 977  
 E-mail: info@balancesystems.it  
 www.balancesystems.com



**Balance Systems**